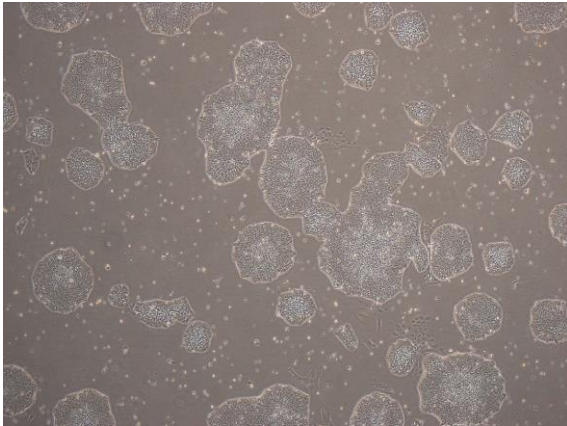
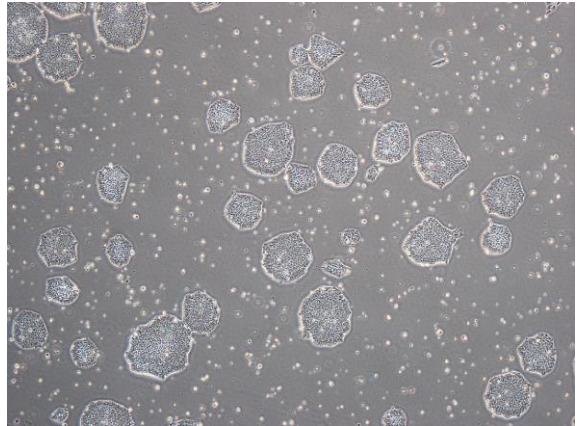


【 CiRA-j-1033 】 Morphology of iPSC colonies

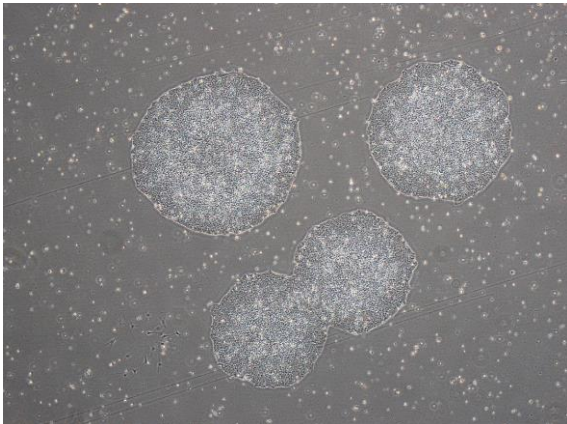
CiRA-j-1033-A: passage-2



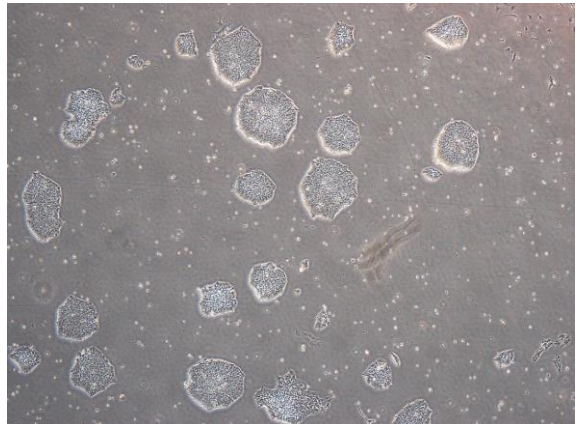
CiRA-j-1033-B: passage-2



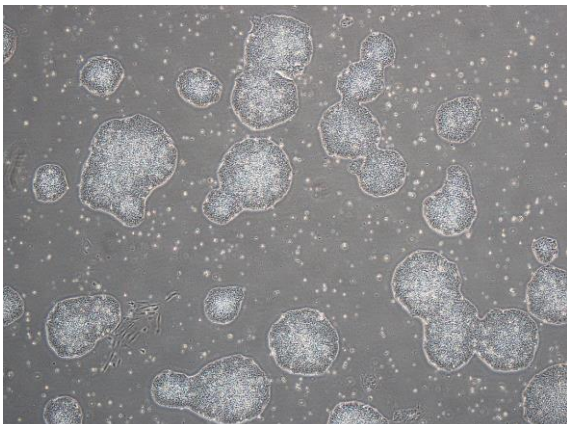
CiRA-j-1033-C: passage-2



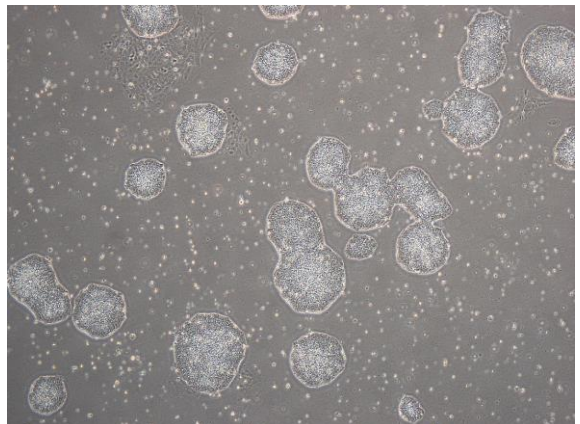
CiRA-j-1033-D: passage-2



CiRA-j-1033-E: passage-2



CiRA-j-1033-F: passage-2



(All images were captured at 4x magnification)